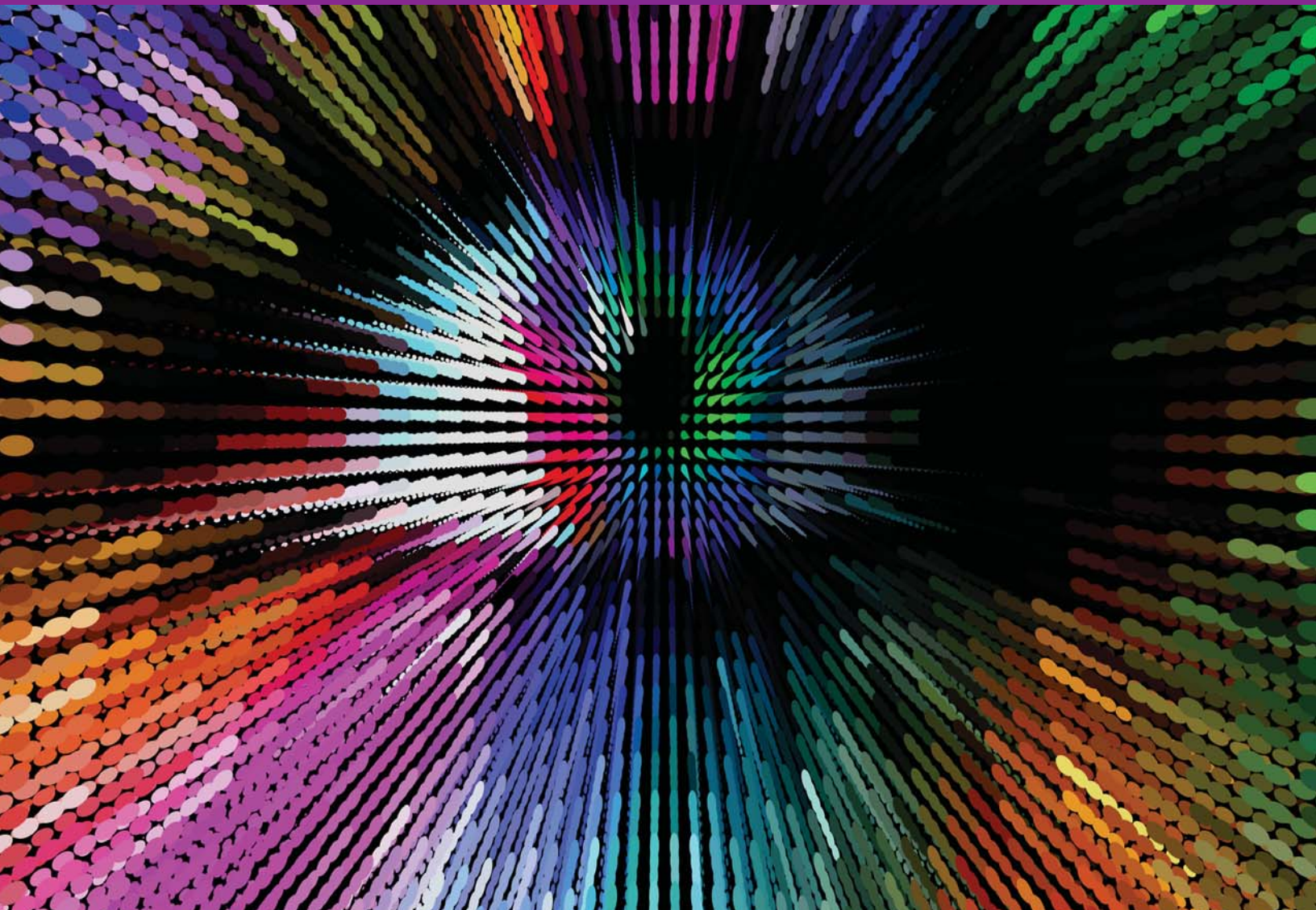


2017 AZOA

Bronstein Contact Lens & Cornea Seminar



Featuring:
19 hours of COPE-Approved Education



January 13 - 15
Hilton Scottsdale Resort
Scottsdale, AZ

easy online registration:
<http://www.azoa.org/Connect>

SCHEDULE OF EVENTS

Friday, January 13

- 8AM** **Registration & Breakfast (Please note registration does not open until 8am)**
- 9AM - 9:50AM** **Slit Lamp Photography and Videography/Byrnes/pending (1 hour)**
This course demonstrates how to inexpensively add close-up photography and videography to the slit lamp exam. Various camera set-up options are presented and explored. Advantages and limitations of the various systems are discussed.
- 9:50AM - 10:10AM** **Break with Exhibitors**
- 10:10AM - 11:50AM** **Aberropia A New Concept in Contact Lens Treatment/Edmonds/50183-CL (2 hours)**
Course describes a new concept in refractive error associated 3rd order and higher aberrations. Evaluation of HOA both qualitatively and quantitatively and instrumentation used is discussed. Appropriate contact lens designs used to correct HOA are recommended.
- 12PM - 1:30PM** **Lunch with Exhibitors**
- 1:30PM - 3:10PM** **Preparing the Ocular Surface for Contact Lenses/Bruijic/44324-GO (2 hours)**
There are many factors which aggravate the ocular surface of contact lens wearing patients. This course outlines the factors affecting the eye, the contact lens and how they interact.
- 3:20PM - 5:00PM** **Pain Management in Primary Eye Care/Bruijic/42376-PH (2 hours)**
As optometry has evolved, so has our responsibility in providing relief for our patients in pain. This course will discuss topical and oral treatment options for various conditions that we encounter requiring pain management.

Saturday, January 14

- 7AM** **Registration & Breakfast**
- 8AM - 9:50AM** **New and Innovative Uses for Contact Lenses/Kading/46312-CL (2 hours)**
New and Innovative Uses for Contact Lenses is a progressive lecture that touches on the latest trends in the contact lens industry. The topics of the course include aberration controlled contact lenses, sports contact lenses, keratoconus contact lens options, scleral shells, large diameter contact lenses, modern methods of piggybacking, hybrid contact lenses, orthokeratology and corneal reshaping, presbyopic lens options, and silicone hydrogels place in the contact lens world.
- 9:50AM - 10:10AM** **Break with Exhibitors**
- 10:10AM - 11:50AM** **Practical Approaches for Advanced Anterior Segment Disease/Kading & Bruijic/48301-AS (2 hours)**
Anterior segment diseases spread far and wide. They range from inflammatory to viral to bacterial as well as being of unknown etiology. This course reviews several of the common conditions that we experience in eye care and discusses the causes of the conditions, how we can best diagnose them and the areas of treatment that can be considered.
- 12PM - 1:00PM** **Lunch with Exhibitors**
- 1:00PM - 3:40PM** **Fitting GP Scleral Lenses Beyond the Limbus/Byrnes/45601-CL (3 hours)**
This workshop is for optometrists desiring to add scleral GP contact lens fitting to their practice. Participants fit each other with 14mm to 18 mm scleral lenses, experiencing the fitting process from both the practitioner and the patient perspective. Lens fits are documented to include lens-cornea and lens-limbus clearance values, fitting zone alignment or bearing, and tear flow. A selection of fits are video-recorded and discusses in grand rounds style.

3:50PM - 5:10PM

**Utilizing Biological Contact Lenses to Their Maximum Potential/Woo/
47412-AS (1 hour) - A hands on wetlab (sponsored by Katena) will follow this course.**

This course reviews the history of amniotic membrane use in medicine. Amniotic membrane properties are reviewed. Ocular use of amniotic membranes is discussed. Biological contact lenses created with amniotic tissue are described. Risks and benefits of biological contact lenses are discussed. This course details the applications of biological contact lenses and their use in optometry. The differences between wet and dry amniotic membranes are discussed.

5:15PM - 6:15PM

AZOA Cocktail Reception in Lobby Bar

Come have a cocktail on the AZOA and mingle with your colleagues! Drink tickets will be provided.

Sunday, January 15

7AM

Registration & Breakfast

8AM - 9:40AM

Hybrid Contact Lenses Solving the Hard Soft Paradox/Edmonds/50367-CL (2 hours)

Lecture reviews the development of Hybrid CLs from past to present, describes handling, care and fitting of currently available Hybrid CLs and Discusses case reports of various corneas fit with Hybrid CLs and strategies for post fit complications and problems.

9:50AM - 11:30AM

The Future of Dry Eye/Kading/44997-AS (2 hours)

Dry eye has become a dry topic. With so many treatment options and so many diagnostic tests, it can become complicated to know when and how we should use what type of treatment. The Future of Dry Eye course looks at the current systems and the way that they miss the mark.

STAYING AT THE HILTON SCOTTSDALE RESORT & VILLAS

6333 N. Scottsdale Rd, Scottsdale, AZ 85250



Hilton Scottsdale Resort & Villas is located in the heart of Scottsdale, Arizona, within minutes of shopping, dining, world-class golf, and business districts. Set in the shadow of the majestic Camelback Mountain, this AAA Four Diamond Scottsdale resort combines a relaxed ambience with decor inspired by the Sonoran Desert.

Unique from other Scottsdale resorts are our spacious two-bedroom villas that can sleep up to eight with a full kitchen and dining area. Upgrade to one of these secluded villas and enjoy beautiful views from your private patio, and access to the private pool dedicated solely to villa guests. Stay connected with free WiFi in every Scottsdale hotel room.

Take advantage of the many amenities at our Scottsdale hotel without a resort fee. Spend your days relaxing poolside with cocktail in hand, experiencing a BodyWalking treatment at our spa or indulging at one of our three onsite restaurants, including Fleming's Steakhouse.

With a great mix of social spaces, an outdoor pavilion (seasonal), two extravagant ballrooms and multiple breakout rooms, you can create an unforgettable meeting or event at our Scottsdale hotel.

FOR RESERVATIONS CALL: 480-948-7750

Use Group Code: AZA

AZOA Rate is \$194 a night if made by 12/12/2016

- 2017 BRONSTEIN REGISTRATION FORM -

Total of 19 Hours COPE CE * (Some courses are in the process of being COPE approved)

Name: _____ OE Tracker #: _____

Address: _____

City: _____ State: _____ Zip: _____

Phone: _____ Email: _____
(email is required)

COMPLETE PACKAGE: CIRCLE ONE

(All CE & Meals Included)

Optometrist

Student

Received Before 12/23

\$350

\$20

Received after 12/23

\$450

\$20

DAILY RATE: CIRCLE ONE

(All CE & Meals Included)

Friday *OR* Saturday (CIRCLE DAY)

\$200/day

Sunday

\$150

INDIVIDUAL MEALS FOR SPOUSES/GUESTS:

Friday Breakfast (\$35)

of Guests _____

= \$ _____

Friday Lunch (\$45)

of Guests _____

= \$ _____

Saturday Breakfast (\$35)

of Guests _____

= \$ _____

Saturday Lunch (\$45)

of Guests _____

= \$ _____

Sunday Breakfast (\$35)

of Guests _____

= \$ _____

TOTAL REGISTRATION AMOUNT: _____

PAYMENT INFORMATION:

☐ Enclosed is my check payable to the AZOA in the amount of \$ _____

☐ Please charge my credit card: ☐ Visa ☐ Mastercard ☐ American Express ☐ Discover

Card #: _____ Exp. Date: _____

Billing Address Zip Code: _____

MAIL COMPLETED FORM TO: ARIZONA OPTOMETRIC ASSOCIATION

1702 E Highland Avenue, #213, Phoenix, AZ 85016 or

Fax to: (602) 264-6356

Questions? and to confirm receipt of form, email: kate@azoa.org

TO RECEIVE EARLY REGISTRATION RATE: Forms and payment must be received on or before 12/23/16. CANCELLATION POLICY: All cancellations must be in writing. In order to receive a refund of 100% of the registration fee (less a \$25 cancellation fee), cancellations must be received prior to 1/1/17. No refunds after that date. **Please note that pre-registration closes on 1/10/17. Registration can be done onsite after this date. Registrations are not accepted over the phone. *THE AZOA NO LONGER USES PAPER CE CERTIFICATES AS WE ARE NOW USING ARBO'S OE TRACKER APP FOR SMARTPHONES***

easy online registration: <http://www.azoa.org/Connect>

2017 Bronstein Seminar Faculty

Dr. Mile Brujic is a partner of Premier Vision Group, a successful three location optometric practice in Northwest Ohio. He practices full scope optometry with an emphasis on ocular disease management of the anterior segment, contact lenses and glaucoma. He is active at all levels of organized optometry. Dr. Brujic is on the editorial board for a number of optometric publications. He has published over 200 articles and has given over 1000 lectures, both nationally and internationally on contemporary topics in eye care.

Dr. Charles Edmonds received his OD degree from the Pa. College of Optometry and currently practices with the Edmonds, Husz & Pemberton Eye Center in Tucson, Arizona which is a contact lens specialty practice which he founded. He is a diplomate of the Cornea and Contact Lens Section of the American Academy of Optometry, Full member of the International Society of Contact Lens specialists and an Adjunct Assistant Clinical Professor for Pacific College of Optometry. He has been a clinical investigator for the contact lens industry for the past 40 years and has lectured both nationally and internationally and published numerous articles on keratoconus, CL for irregular corneas and CL instrument technology.

Dr. Stephen P. Byrnes, FAAO maintains a primary care private practice with specialization in contact lenses in Londonderry, NH, USA. He is adjunct clinical faculty at The New England College of Optometry. He lectures internationally on RGP Contact Lens Design, Fitting, and Problem-solving. Dr. Byrnes received his optometric training at The New England College of Optometry in Boston, Massachusetts, earning his optometric degree in 1977. He was a member of the clinical teaching faculty at New England Eye Institute from 1977 to 2004 and an adjunct clinical preceptor at Manchester VA Medical Center from 1990 to 2006. Dr. Byrnes was the academic education consultant to the schools and colleges of Optometry in North America for Bausch & Lomb and Polymer Technology from 1994 to 2012. He has maintained a private optometric practice in Family Vision Care and Specialty Contact Lens Care since 1981. Dr Byrnes has been a clinical investigator for numerous manufacturers of contact lenses and lens care solutions. He routinely participates in clinical studies of RGP contact lens materials, RGP and soft contact lens designs, RGP and soft contact lens solutions, and artificial tears. Dr. Byrnes is a Fellow of the American Academy of Optometry. He is a past president of the New England Council of Optometrists. He is a past president and member of the New Hampshire Optometric Association. He is a member of the American Optometric Association. Dr. Byrnes was awarded New Hampshire Optometrist of the Year in 1993 for his leadership in passage of therapeutic privileges and optometric scope of practice legislation.

Dr. Dave Kading likes to do things a little different. He lives outside the box and is willing to take chances if it will push his patients and the profession forward. He completed a yearlong residency in Cornea and Contact Lenses following graduation from Pacific University. Since 2007, Dr. Dave and his wife Dr. Kristi Kading have grown and developed their practice into a 2 location 4-doctor practice that encompasses primary care and specializes in dry eye, custom contact lenses, binocular vision and anterior and posterior disease management. Dr. Kading emphasis is on keratoconus and Anterior Segment Disease, Meibomian Gland Dysfunction and Dry Eye. Although he treats patients with all types of disease, his main goal is prevention and cessation of progression of all disease states. Dr. Kading hosts a one-year anterior segment post graduate fellowship that focuses on dry eye and contact lens management. He welcomes and teaches interns from 5 different optometry schools into his practice. He enjoys conducting clinical research within his practice, he has written hundreds of articles and papers, and has given several hundred lectures. He has a regular Video Column called Clinical Insights, a written column in Contact Lens Spectrum, and an email column in Contact Lens Today. He also owns a company called optometric insights that accelerates success for OD's and students with Dr. Mile Brujic. Above all things, he enjoys spending time with his wife, Dr. Kristi Kading and their three daughters.

Dr. Stephanie Woo graduated with honors from the Southern California College of Optometry and completed a Cornea and Contact Lens residency in St. Louis, Missouri. She is a Fellow of the American Academy of Optometry and a Fellow of the Scleral Lens Society. Dr. Woo is the Public Education chair for the Scleral Lens Society, and she authors the "Gas Permeable Expert" column for Review of Contact Lenses. She enjoys lecturing around the world in the topic of contact lenses and anterior segment diseases.

2017 Bronstein / January 13 - 15

Hilton Scottsdale Resort & Villas

6333 N. Scottsdale Rd, Scottsdale, AZ 85250

480-948-7750 / Use Group Code: AZA

AZOA Rate is \$194 a night if made by 12/12/2016

easy online registration: <http://www.azoa.org/Connect>



ARIZONA OPTOMETRIC ASSOCIATION

1702 E. Highland Ave, Ste. 213

Phoenix, Arizona 85016

PH: 602.279.0055 / FX: 602.264.6356

VISIT US AT: WWW.AZOA.ORG TO REGISTER ONLINE

2017 Bronstein / January 13 - 15

Hilton Scottsdale Resort & Villas

6333 N. Scottsdale Rd, Scottsdale, AZ 85250

480-948-7750 / Use Group Code: AZA

AZOA Rate is \$194 a night if made by 12/12/2016